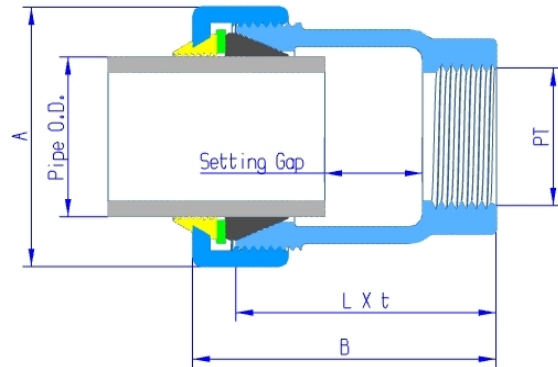
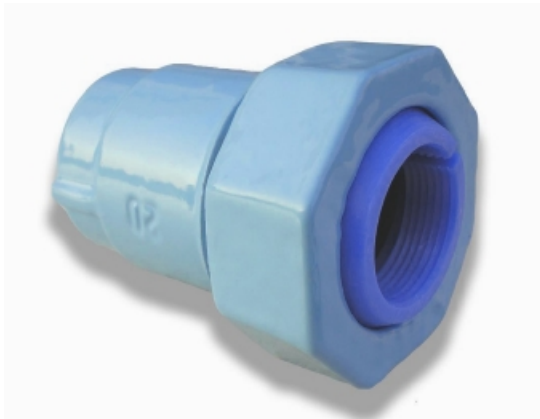


# Junior Mechanical fittings

## Standard series

### Female Scoket Nipple

Plain End to Female PT Thread



### Main Dimensions

Unit: mm

Size	Pipe O.D.		Coupling Overall		Body		Setting Gap		PT	Weight
	SGP-PD *	HIVP * *	A	B	L	t	Min	Max	PT-n	Kg
15	24.7	22.0	49	64	55	3	3	20	1/2"-14	0.2
20	30.2	26.0	55	65	55	3	3	13	3/4"-14	0.3
25	37.0	32.0	66	70	60	3	4	16	1"-11	0.5
32	45.7	42.0	73	76	65	4	5	22	1 1/4"-11	0.5
40	52.6	48.0	80	81	70	4	5	26	1 1/2"-11	0.7
50	64.5	60.0	96	87	75	5	7	29	2"-11	1.0

\* JWWA K 132: Polyethylene powder-coated steel pipe for water supply.

\* \* JIS K 6742: Unplasticized poly (vinyl chloride) (PVC-U) pipes for water supply  
or other Imperial pipes including PVC pipe, PE Pipe, ABS pipe and Steel pipe.

This item can be supplied without outlet for use as end cap or with outlet connectable with threaded fittings.

Outlet is available with 1/2", 3/4", 1", 1 1/4", 1 1/2" and 2" BSP or BSPT thread as per requirement.



**Qingdao Rockpower Machinery Co., Ltd.**

1506, Sino-Commerce Building, 100, Middle Hongkong Road, Qingdao, China  
[www.rockpower.cn](http://www.rockpower.cn)

Tel.: (0532) 8592-1910 8592-1920 Fax.: (0532) 8592-1252  
e-mail: [rockson@rockpower.cn](mailto:rockson@rockpower.cn)