

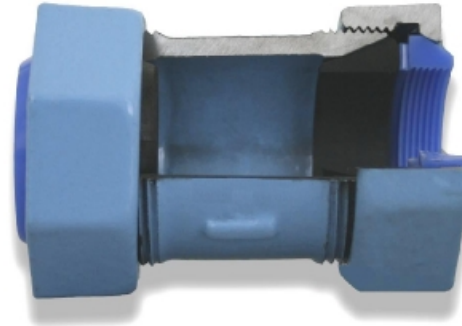
Junior Mechanical fittings

Standard series

The Standard series of Junior Mechanical fittings are designed to suit specified outside diameter tailored to your particular needs.

Typical pipes connectable with Standard Series Junior Mechanical Fittings includes:

Polyethylene Pipes for water Industry,
Epoxy Coated Steel Pipes for potable water,
Stainless Steel Pipes,
Galvanized Steel Pipes for water works,
Carbon Steel Pipes for ordinary piping.



Available in sizes from DN15 to DN50 for all kinds of fittings including Couplings, Elbows, Tees, Nipples and Caps etc supplying complete solutions for connection:

- Plain End to Plain End
- Plain End to male PT Thread
- Plain End to Female PT Thread
- Male PT Thread to Hose
- Plain End to Hose

with working pressure 1.0Mpa / 1.6Mpa for water and 0.4MPa for gas.

Features and Benefit:

■ Fast and easy piping work

Junior Mechanical fittings are designed for a wide variety of plain-ended pipes connection, no more need on-site threading or welding, just push on the pipe and tighten the caps, the fittings will form an effective permanent leak tight joint.

Piping work in narrow corners and in all weathers is possible now by using Junior Mechanical fittings.

■ Full protection and high reliability

Inside and outside surfaces are Cathode Electrophoresis Coated and then Epoxy Powder Coated to supply double protection.

Thread in body and caps are Cathode Electrophoresis Coated, elastomeric gaskets and lock rings are made of the best materials available for the duty to supply high reliability.

The Standard Series of Junior Mechanical Fittings made of malleable cast iron are designed to last the life of the pipeline in all weather conditions including cold region.

■ End load bearing

The Standard Series of Junior Mechanical Fittings are designed with Lock Rings made of Acetal Copolymer to bear End Load according to Type 2 performance requirements of the UK Water Industry Specification WIS-24-01.

■ Setting Angularity allowed

The Standard series of Junior Mechanical fittings are designed to allow upto 6° Setting Angularity.

The joint flexibility make long curve pipeline connection possible without special bends and allows piping work on rough or uneven terrain even in condition of ground settlement.

■ Silent and safe fluid handling

Gap at pipe ends and elastomeric gaskets can isolate and absorb noise and vibration caused by turbulent flow.

Junior Mechanical Fittings can be used as Unions to supply extra convenience when removing pipes for maintenance or rotation of pipe section for cleaning or wear reduction.



Qingdao Rockpower Machinery Co., Ltd.

1506, Sino-Commerce Building, 100, Middle Hongkong Road, Qingdao, China
www.rockpower.cn

Tel.: (0532) 8592-1910 8592-1920 Fax.: (0532) 8592-1252
e-mail: rockson@rockpower.cn